



# ANNA ADARSH

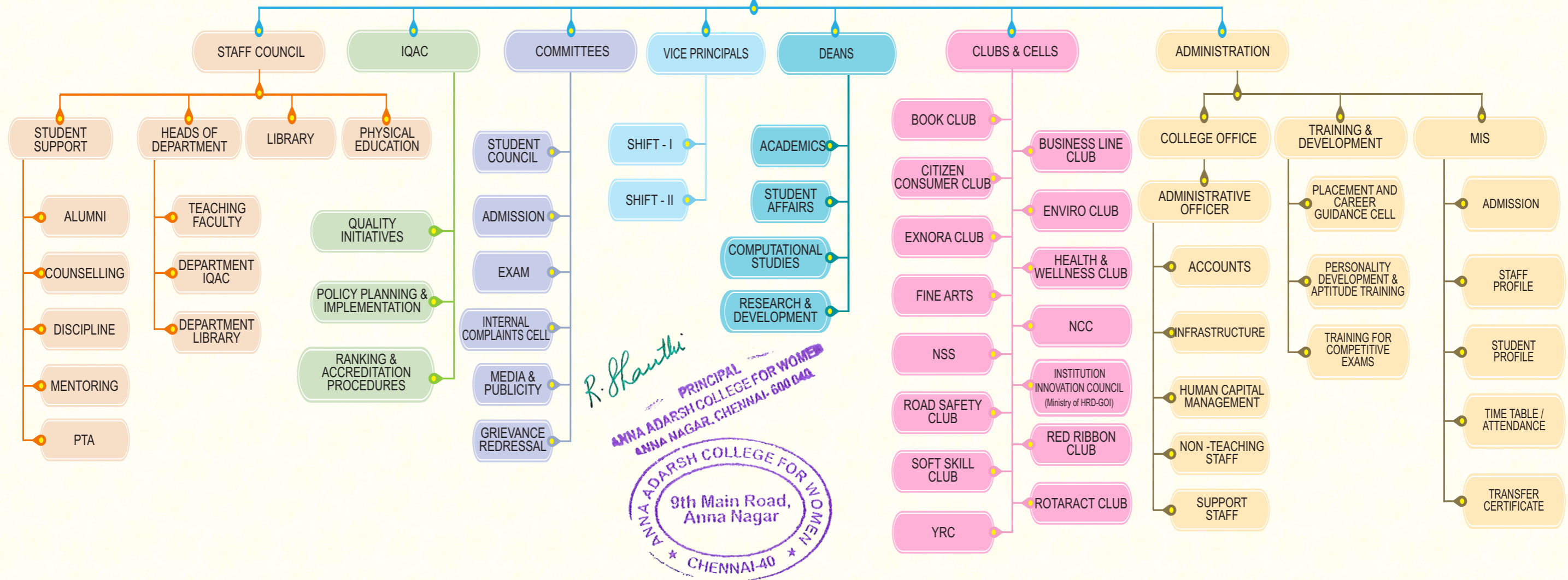
COLLEGE FOR WOMEN

BOARD OF MANAGEMENT  
PUNJAB ASSOCIATION

GOVERNING COUNCIL

CORRESPONDENT

PRINCIPAL



*R. Hanthi*  
PRINCIPAL  
ANNA ADARSH COLLEGE FOR WOMEN  
ANNA NAGAR, CHENNAI-600 040

